



# CHRIST CHURCH NW1



# SCHOOL INFORMATION 2015-2016

CHRIST CHURCH CE PRIMARY SCHOOL  
REDHILL STREET  
LONDON, NW1 4BD

Tel: 020 7387 7881  
Email: [admin@cchurchnw1.camden.sch.uk](mailto:admin@cchurchnw1.camden.sch.uk)  
Website: [www.cchurchnw1.camden.sch.uk](http://www.cchurchnw1.camden.sch.uk)

Headteacher: PAULA AITCHESON-WALKER  
Assisant Headteachers: LORRAINE PUTTICK  
ROXY AITKEN  
Chair of Governors: GILL GREEN

# WELCOME

Welcome to Christ Church School. We hope this booklet provides you with all the information you need. However, should you require any further information please do not hesitate to contact the School Office on 020 7387 7881.



## ***Mission Statement***

Christ Church is a small, caring school which is committed to a broad, balanced curriculum and to a continual raising of standards. We aim to contribute to the spiritual, moral, cultural, mental and physical needs of every individual.

We are a Church of England school, with a strong commitment to the teaching of Christianity whilst supporting a multi-faith approach to the curriculum. We recognise, value and celebrate the rich cultural diversity that exists in our school.

The Christian ethos of the school is reflected in our positive, disciplined and calm atmosphere. We believe that effective learning takes place when children work in a purposeful and stimulating environment that supports a wide range of learning styles. Mutual respect between adults and children promotes excellent behaviour and well developed social skills. With this approach we seek to achieve high academic standards.

We aim to cater for each individual, taking particular account of any specific needs or abilities. We endeavour to ensure that all our children fulfil their potential and, within this context, we emphasise health and safety, enjoyment and achievement and the beginnings of responsibility for themselves and others. These skills will be carried forward to the next phase of education and throughout life.

The whole school community is committed to a collective responsibility for the implementation of the values inherent in this statement.

## **Our School Aims - Every Child Matters**

### **The Ethos of the School**

The school aims to provide a positive, disciplined, purposeful environment within a Christian context. We aim to teach children to be caring, to exhibit good behaviour and appropriate social skills and to begin to take responsibility for themselves and others.

### **The Values of the School**

The School aims to value every child and to contribute to the Spiritual, Moral, Cultural, Mental and Physical well being of our whole school community. We value the diversity of our community and we aim to promote the health and safety of everyone.

### **The Standards of the School**

The School aims to teach a balanced Curriculum and to ensure that each child fulfils his or her potential. We aim to provide teaching and learning of a high standard. We believe that this is achieved when pupils are highly motivated, enjoy coming to school and are appropriately challenged.

## Our School Rules

Treat other people the way you want to be treated -  
be kind; be honest; be patient.

If someone does or says something that hurts or upsets you,  
tell an adult immediately.

Respect everyone and everything.

Always try your best.



### TEACHING STAFF 2015-16

Headteacher	Paula Aitcheson -Walker
Senior Assistant Headteacher/SENDCo	Lorraine Puttick
Assistant Headteacher	Roxy Aitken
Year 6/part time SLT	Amy Stroud
Year 5	Emma Bain
Year 4	Abigail Ladd
Year 3/part time SLT	David Harvey
Year 2	Sylvie Palany
Year 1	Lily Mildmay-White
Reception	Sarah Storey
Nursery Teacher	Arti Kotecha
PPA Cover	Ed Bray
Nursery Manager	Bernie O'Connell
Music Instructor	Jason Rowe
HLTA	Denise Cooper
Vulnerable Groups Co-ordinator	Sharron Lakin
Administrative Officer	Jeannie Smith
Administrative	Tracy Butcher
Bursar	Brenda McShane
Teaching Assistant Oak/Willow	Sharon Latimer
Teaching Assistant Cedar/Linden	Jackie Arnold
Teaching Assistant Rowan/Sycamore	Natalie Horn-Marquez
Teaching Assistant Rowan	Lucy Ayetey
Teaching Assistant Chestnut	Shaheena Begum
Teaching Assistant Holly	Husna Begum
Learning Support Assistant	Lorna Rose
Learning Support Assistant	Lara Walter
Learning Support Asssistant/Breakfast Club	Max Tshoukas
Learning Support Assistant	Amy Howe
Learning Support Assistant	Gemma Davies
Senior Meal-time Supervisor	Denise Cooper
Meal-time Supervisor	Husna Begum
Meal-time Supervisor	Sharon Latimer
Meal-time Supervisor	Jackie Arnold
Meal-time Supervisor	Natalie Horn-Marquez
Meal-time Supervisor	Rue Hussain
Meal-time Supervisor Chestnut	Shaheena Begum
Meal-time Supervisor Holly	Lucy Ayetey
Site Services Manager	Trevor Winston
Breakfast Club Manager	Sarah Hall
Football/Clubs	Ed Bray

# OUR SCHOOL DAY



The school gates open at 8:40 am, children in KS1/Foundation Stage must not be left in the playground, they must be supervised by an adult until 8:50 am when a member of staff will be on duty.

## SCHOOL SESSION TIMES

### Nursery

Morning Session 9:00- 12 noon  
LUNCH 12:00-1:30  
Afternoon Session 1:30-3:30

### Reception/KS1

Morning Session 9:00-12:00  
LUNCH 12:00-1:00  
Afternoon Session 1:00-3:30

### KS2

Morning Session 9:00-12:15  
LUNCH 12:15-1:15  
Afternoon Session 1:15-3:30



## SCHOOL DINNERS

Children can have either a school dinner or a packed lunch. A school dinner costs £2.16 per day, £10.80 each week which must be paid in advance on a Monday morning to the School Office. If you wish to change to school dinner/packed lunch this can only be done at the beginning of a new term. If you have any queries about lunch-time please come and ask the School Office.

If you think you may be eligible for free school meals please complete a form on line at [www.camden.gov.uk/fsm](http://www.camden.gov.uk/fsm)

## PACKED LUNCH

Please put your child's packed lunch in a suitable lunch bag/box, clearly marked with your child's name and class. We ask that you provide a healthy lunch (no sweets/chocolate/juice or fizzy drinks) only water.

## MILK

Children in our Nursery have milk during the afternoon.



## FRUIT

As part of the Government's Healthy Eating Policy, the School is provided with fruit and vegetables daily, for pupils in EYFS and Years 1 and 2. Children in Years 3-6 are encouraged to bring fruit/vegetables to school with them for break time.

# SCHOOL UNIFORM

\* Available to order from School or [www.brigadeuniformdirect.uk.com](http://www.brigadeuniformdirect.uk.com)

## Reception-Year 6

- \* Gold Polo Shirt with school logo
- \* Navy Blue V-Neck Sweatshirt/Cardigan with school logo
- Navy Blue Skirt/Trousers or Pinafore Dress (Jogging bottoms are not allowed)
- Socks or Tights - Navy Blue or White
- Shoes or Trainers - Black with no logos/markings
- \* School Book Bag

## SUMMER UNIFORM

Yellow checked dress/navy trouser shorts

## NURSERY

- \* Gold Polo Shirt with school logo
- \* Navy Blue V-Neck Sweatshirt/Cardigan with school logo
- Navy Blue Skirt/Trousers /Joggers or Pinafore Dress
- Socks or Tights - Navy Blue, White or Black
- Shoes or Trainers - Black with no logos/markings
- \* School Book Bag

Nursery do not need a PE Kit

## PE KIT

- \* Gold T-Shirt
- \* PE Bag
- Navy Blue Shorts / Navy Blue Tracksuit bottoms
- Trainers/plimsolls

Please ensure all uniform is clearly marked with your child's name.

## **JEWELLERY**

If your child has pierced ears they must wear studs. Watches are allowed from Year 1 to Year 6 only. No other jewellery is allowed.



Long hair should be tied back (blue/navy blue bands) to reduce the chance of accidents. This also reduces the risk of catching or spreading headlice.



## **SWIMMING - Year 3/4/5 (one term per class)**

**PLEASE NOTE THAT SWIMMING IS PART OF THE NATIONAL CURRICULUM AND IS COMPULSORY.** Children are therefore expected to attend every week. If your child is too ill to swim, as a general rule, they are too ill to attend school. Please do not send them in if they are unwell. We do not provide supervision for children with coughs or colds who are not going swimming. In exceptional cases, children who have genuine medical reasons for not swimming will be catered for in school, as long as a doctor's letter is provided and a member of Senior Leadership Team has approved the request.

Girls: swimming costume (not bikinis) and must wear a swimming hat.

Boys: swimming shorts/trunks (not loose fitting).

Swimming goggles are optional.





# HEALTH & WELFARE

## ATTENDANCE

Regular attendance is a key factor towards your child's achievement at school your child will benefit from this. Attending school regularly and having a good education helps give children the best possible start in life. It is the responsibility of the parents/carers to make sure their child attends school every day and they arrive on time.

If your child is absent from school for any reason you must telephone the school office before 10am. If we do not receive a valid explanation of your child's absence or receive an acceptable reason, then the absence is recorded as unauthorised. All absences both authorised and unauthorised are recorded on your child's annual report.

The Education Welfare Officer regularly inspects our attendance registers for absence/lateness.

## HOLIDAYS

The Chair of Governors does not authorise holidays during term time.

If you take your child out from school or do not return to school on the correct date after school holidays, you will receive a £60 Penalty Notice per parent for each child.

In some cases this may result in the loss of your child's school place.

If you wish to apply for Exceptional Leave, you will need to fill in a green form which is available from the School Office.

## MEDICINE

If your child needs to take medicine whilst at school, please note that only medicines which have been prescribed by your child's doctor can be administered at school. If your child does need to take prescribed medicine during school hours, please come to the school office to complete a consent form allowing the Senior Leadership Team/admin staff to do this.



## ASTHMA INHALERS

If your child suffers from asthma you will need to provide the school with an inhaler, clearly marked with your child's name and class.



**PLEASE NOTE THAT STAFF ARE ACTING VOLUNTARILY WHEN ADMINISTERING MEDICINE TO CHILDREN.**

## **WHO ARE THE GOVERNING BODY & WHAT THEY DO?**

The Governing body are responsible for the overall running of the school and work in close collaboration with the Headteacher/Senior Leadership Team and staff to ensure that the school successfully fulfils its aims.

The Governing body is made up of representatives from the Parish Church Council, London Diocesan Board for Schools, Headteacher, teaching staff, support staff, local community, and parents.

The Governing body meet half termly. Finance/Premises/Staffing committees also meet half termly.

## **MAINTENANCE FUND**

We are a voluntary aided school, the school is responsible for providing a 10% contribution for maintenance and repair of the building. We therefore ask for £15 per child donation each term which can be paid in the following way:

- 1) £15 per term
- 2) £40 in advance for the year
- 3) Weekly (please arrange with the school office)



## **PARENTS IN PARTNERSHIP**

All parents/carers who have a child in school are automatically members of PIP. There is an enthusiastic committee who arrange fundraising and social activities throughout the year.

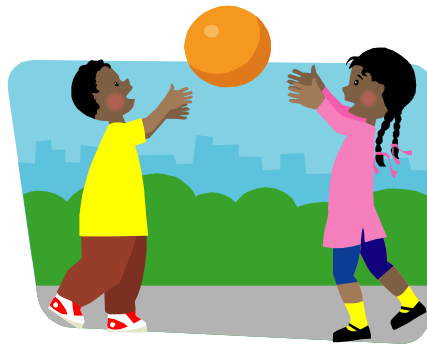
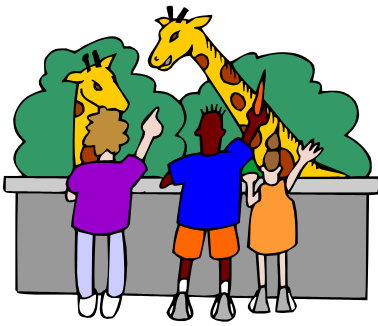
Money raised supports the curriculum within the school, such as resources and trips.

Everyone is asked to support their efforts and encouraged to get involved.

Meetings with parents are held throughout the year.

## **VISITS**

We ask parents to sign a consent form to enable their child to go on local trips e.g to the park, museums, library, local shops/cinema. You will be notified of each trip. Some educational visits will be charged to parents to cover entrance fees. If parents have problems with payment then please speak to the School Office.



## GENERAL INFORMATION

- Every term your child's class will perform a Friday assembly. Parents are welcome to come and watch. Friday assembly starts at 2:45 pm, you will be informed by the class teacher when it is your child's class assembly.
- School fund is collected every Wednesday. We ask for a voluntary contribution of 5p-10p per child.
- P.E. Kit should be brought into School on a Monday morning and taken home on a Friday afternoon for washing (P.E. Kit is not required for Nursery children).
- Personal Possessions - Children in Years 5 & 6 only may bring mobile phones to school. Mobiles must be taken to the School Office each morning and collected at 3.30 pm.
- We send out a Newsletter every fortnight, please ensure you read it carefully.
- We are a Church of England School and attend Church for Harvest Festival/Christmas & Easter.
- Concerns - These should be addressed in the first instance to the class teacher, who will discuss the matter with a member of the Senior Leadership Team. For unresolved concerns further details about the Complaints Procedure are available upon request.
- Any other queries please ask at the School Office.

