



# Christ Church CE

## Primary School

*The Christian faith is at the heart of our school community.*



Redhill Street, Camden, London, NW1 4BD Tel: 0207 387 7881

Email: [admin@cchurchnw1.camden.sch.uk](mailto:admin@cchurchnw1.camden.sch.uk) Website: [www.cchurchnw1.camden.sch.uk](http://www.cchurchnw1.camden.sch.uk)

## Newsletter Issue 3 - 19<sup>th</sup> January 2018

### Awards

Last week's 'Attendance Bears' went to:

KS2: **Willow**

KS1/EYFS: **Chestnut**

Last week's 'Early Birds' went to:

KS2: **Cedar**

KS1/EYFS: **Rowan**

Head teacher's award: **Daisy (Sycamore)**

### Daily Mile Reward

Ed will be inviting children to take part in a special trip next week as part of the 'Daily mile' initiative.



### Coffee Morning



On Friday 26<sup>th</sup> January at 9:15am we will be holding a coffee morning for parents in the hall. Husna's daughters will be coming, there will be a Condolence book to sign and we will be taking a collection in Husna's memory.

All welcome.

### Dates for your diary

**Monday 22<sup>nd</sup> January** - KS1 football club

**Tuesday 23<sup>rd</sup> January**- Year 4 swimming (9:00am), Jam Jnr, Year 6 maths booster with Amy, Table tennis club with Abigail, KS2 art club with Erica, Football team matches- Regent's High

**Wednesday 24<sup>th</sup> January** - Year 5 Museum of London trip, Y6 reading booster with Paula, KS2 dance club with Super Star Sport

**Thursday 25<sup>th</sup> January** - Jam snr, Year 6 maths booster with Lorraine, Key stage 1 dance club with Ed

**Friday 26<sup>th</sup> January** - Parents' coffee morning, Year 4 class assembly

### Class assembly dates

26<sup>th</sup> January - Cedar - Year 4

2<sup>nd</sup> February - Willow - Year 5

23<sup>rd</sup> February - Oak - Year 6

2<sup>nd</sup> March - Rowan - Year 2

9<sup>th</sup> March - Sycamore - Year 1

16<sup>th</sup> March - Chestnut -

Reception

23<sup>rd</sup> March - Linden - Year 3

Your child's assembly will start promptly at 2:45pm.

### Parking

Please **do not** park on the zig zag lines outside of school. This must be kept clear for emergency vehicle access.

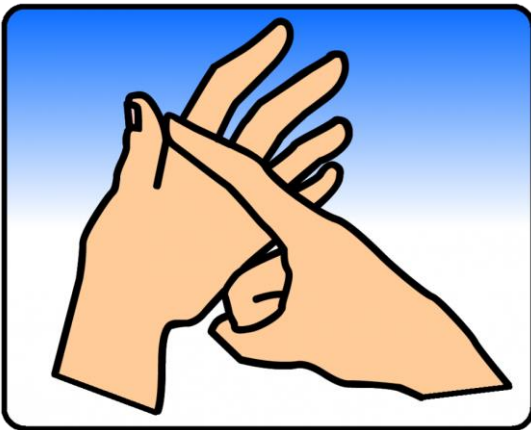


The Local Authority have informed us they will be monitoring cars and noting number plates.

### Sign of the week

Learning the sign language alphabet

A



### 'Time for a New Year Clear Out!'

Do you have old school uniform that is no longer needed or doesn't fit?

Please bring items clean, washed and bagged to the office for the second hand uniform sale, which we will do later in the term.

If you have any books in good condition please also leave these in the office.

### Prayer by Lorraine

Dear God

Thank you for walking with us during this sad time at Christ Church.

Help us to be positive in our daily conduct and in our reflections.

Amen

